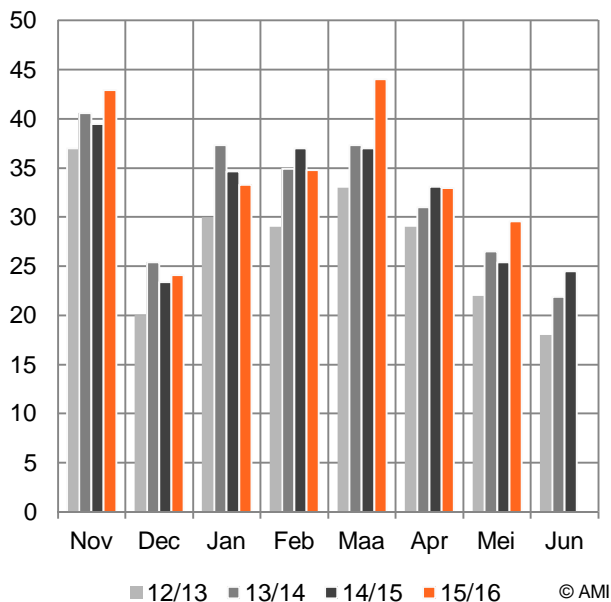
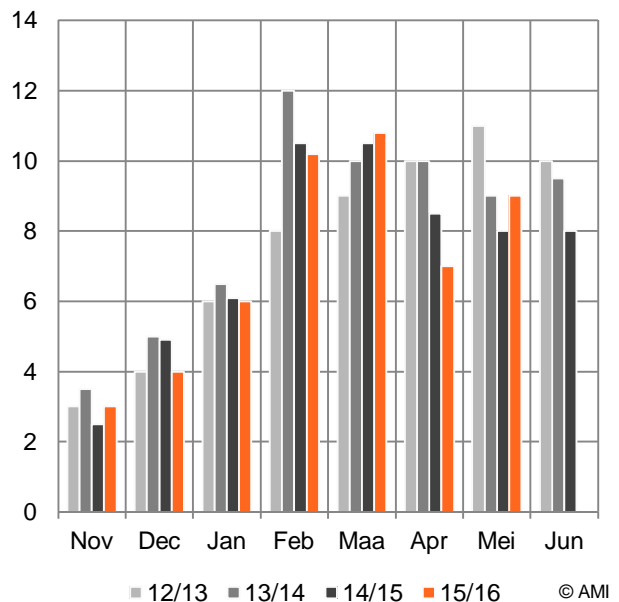
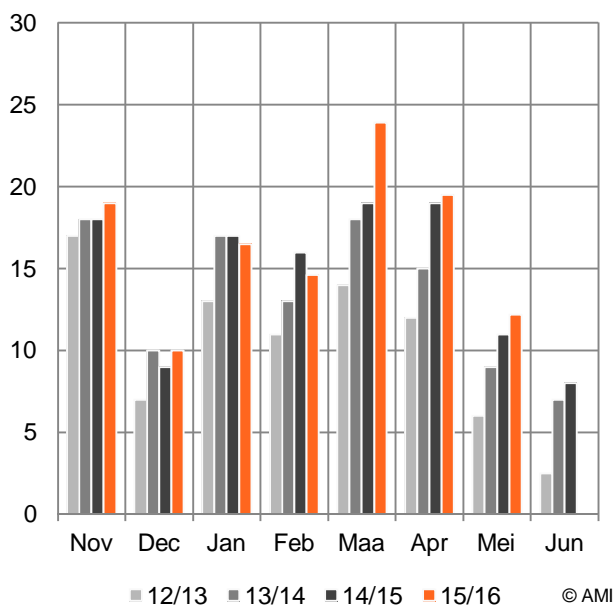


1 Juni in 1.000 ton	voorraad				met vorig jaar (%)		afzet vorige maand				met vorig jaar (%)	
	12/13	13/14	14/15	15/16			12/13	13/14	14/15	15/16		
<b>APPELEN totaal</b>	<b>33</b>	<b>46</b>	<b>47</b>	<b>39</b>	-	17	<b>22</b>	<b>27</b>	<b>25</b>	<b>30</b>	+	<b>16</b>
Boskoop	0	0	0	0	x	x	0	1	0	0	+	13
Elstar	3	8	10	4	-	57	6	9	11	12	+	11
Golden Delicious	4	4	4	4	-	8	3	3	1	1	+	40
Jonagold/-gored	21	24	19	18	-	5	11	9	8	9	+	13
Overige appels	5	10	14	13	-	7	2	5	5	7	+	30
<b>PEREN totaal</b>	<b>12</b>	<b>21</b>	<b>19</b>	<b>23</b>	+	<b>21</b>	<b>13</b>	<b>23</b>	<b>21</b>	<b>25</b>	+	<b>19</b>
Conférence	12	20	19	23	+	21	13	22	21	25	+	19
Doyenné du Comice	0	0	0	0	x	x	0	0	0	0	x	x
Overige peren	0	1	0	0	x	x	0	1	0	0	x	x

Bron: PT, AMI.

**Appelen totaal: afzet per maand (1.000 ton)**

**Jonagold/-gored: afzet per maand (1.000 ton)**

**Elstar: afzet per maand (1.000 ton)**

**Conférence: afzet per maand (1.000 ton)**
